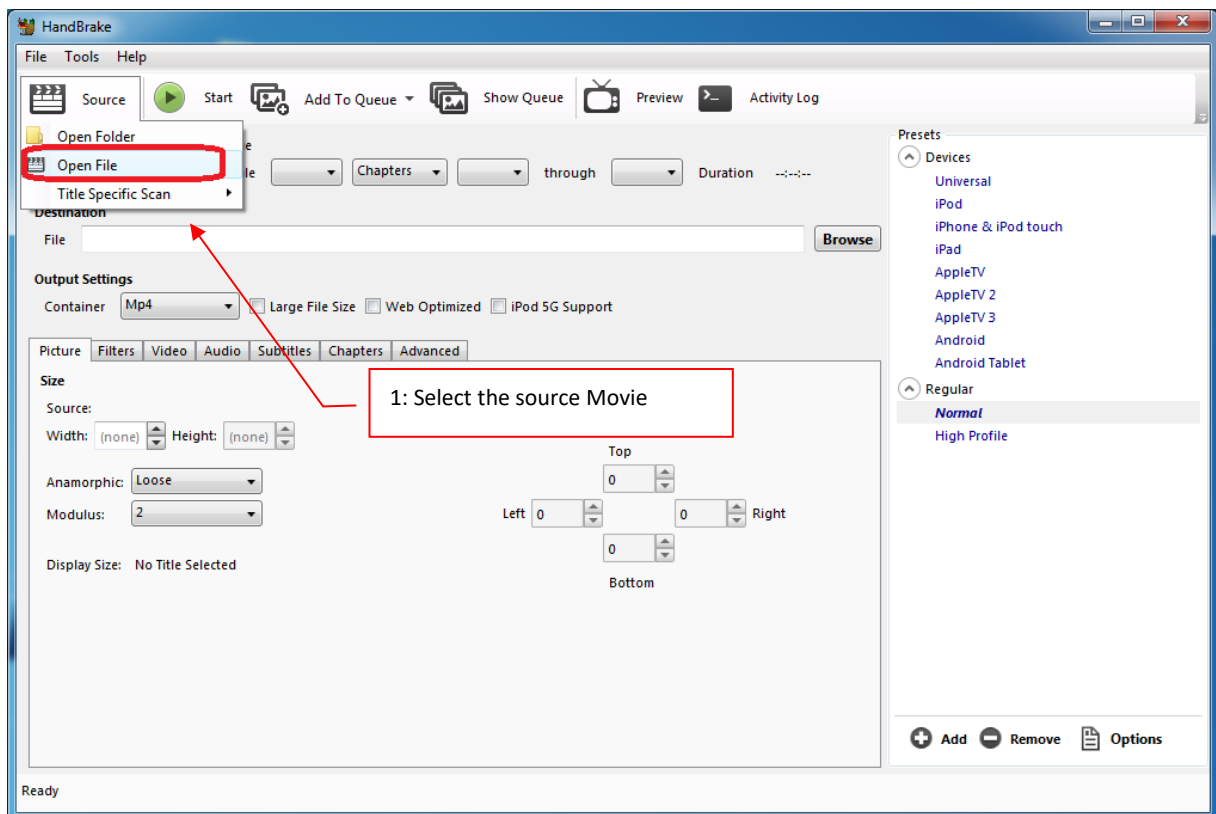




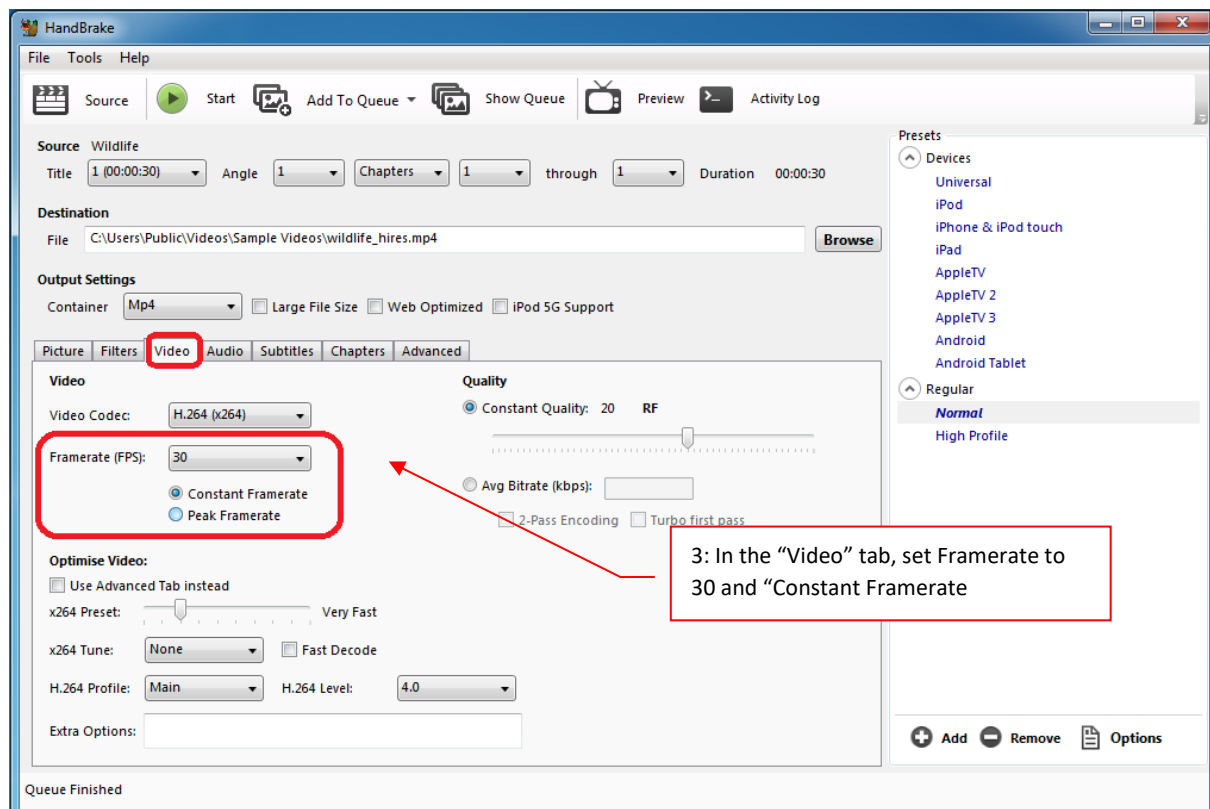
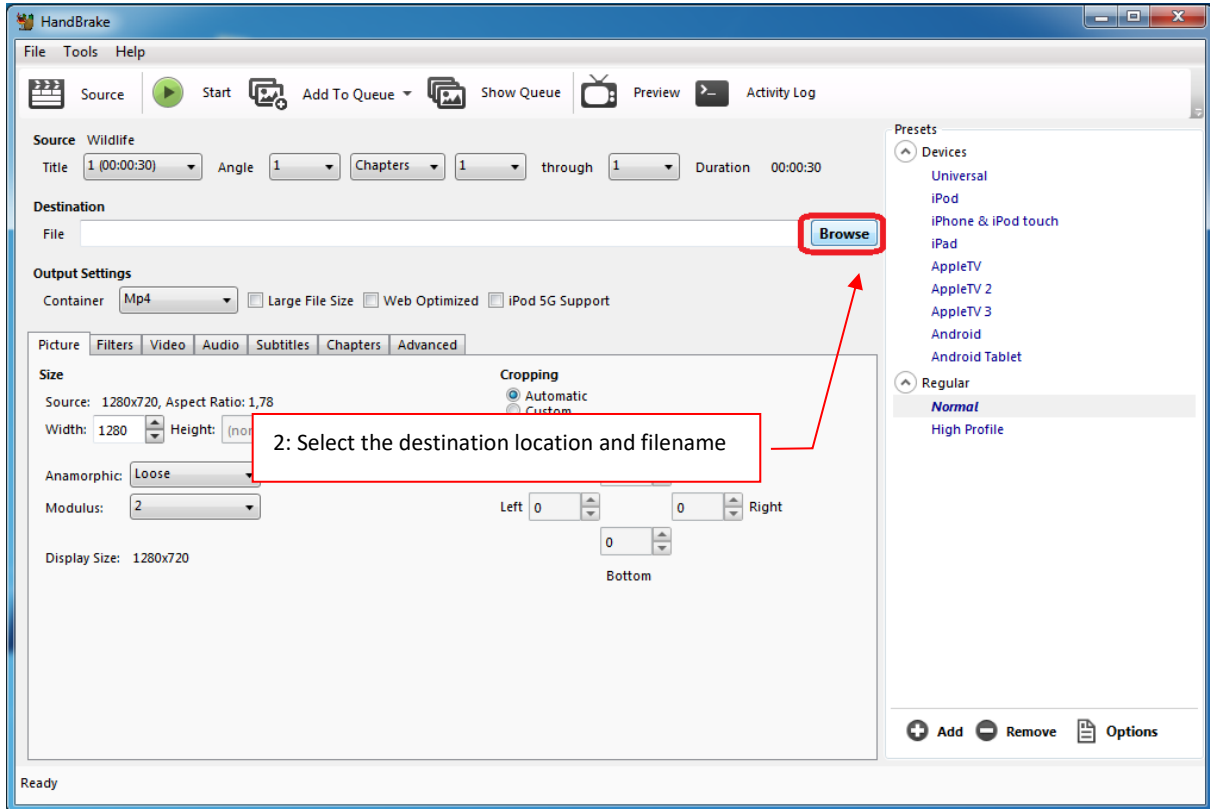
Handbrake

1. Select the source movie
2. Select the destination location and filename
3. In the "Video" tab, set Framerate to 30 and "Constant Framerate"
4. (Optional) In the "Picture" tab, it might help to decrease the resolution of the movie by adjusting the "Width" parameter, if the framerate changes didn't help, or if the original resolution is very high
5. When the settings have been adjusted, press "Start" and the new video file will be generated at the specified location





2





3

